



Single channel MPEG-2 / H.264  
Encoder / Transcoder  
User's Manual

Version: 1.0  
Date: May 2013

## CONTENS DIRECTORY

1. PRODUCT OUTLINE	3
1.1. OUTLINE	3
1.2. THE ENCODER KEY FEATURES:	3
1.3. THE TRANSCODER KEY FEATURES	4
1.4. SPECIFICATION	5
1.5. FRONT PANEL ILLUSTRATION	6
1.6. REAR PANEL ILLUSTRATION	7
2. HOW TO WORK WITH MPEG-2 /H.264 ENCODER / TRANSCODER	8
2.1. ENCODER / TRANSCODER MAIN PART	8
2.2. SETTING OF THE ENCODER PARAMETERS	8
2.3. SETTING OF THE TRANCODER PARAMETERS	8
3. OPERATION	9
3.1. DVBSETTING PROGRAM	9
3.2. DVBTOOLKIT INSTALLATION	9
3.2.1. SERVER PC REQUIREMENTS	9
3.2.2. SOFTWARE INSTALLATION	9
3.2.3. STARTING THE MANAGEMENT PROGRAM	9
3.2.4. ADDING DEVICE TO THE CONFIGURATION PROGRAM	10
3.3. ENCODER SETTINGS	12
3.4. TRANSCODER SETTINGS	14
3.5. OUTPUTS.	18
3.5.1. RECOMMENDATIONS.	18
3.5.2. IP OUTPUTS SETTINGS	19
3.5.3. ASI OUTPUTS SETTINGS	20
4. WARRANTY	21
5. APPENDIX	22
5.1. ENVIRONMENT REQUIREMENT	22
5.2. GROUNDING REQUIREMENT	22
5.3. HOW TO CONNECT NEW DEVICE TO THE SYSTEM THROUGH ETHERNET (TCP / IP)	23
5.4 HOW TO ADD A NEW DEVICE TO THE SYSTEM.	25

## 1. Product Outline

### 1.1 Outline

The device can work in two modes “Encoder” or “Transcoder”. The necessary mode is selected from program menu.

The Encoder is intended for real time encoding of SD/HD signal into MPEG-2 SD or H.264 SD/HD format.

The Transcoder is intended for real-time transcoding of an SD/HD program from MPEG-2 to H.264 format or vice versa and for transrating from MPEG-2 to MPEG-2.

The Encoder / Transcoder can output two independent Transport Streams (TS) which are broadcast simultaneously. One of the two TS provides high resolution (1920x1080 or less) for high quality broadcasting, the other TS provides low resolution (320x240 or less) for broadcasting to mobile devices or Internet. The Encoder / Transcoder enables multiplexing of the two TS onto any of the two ASI outputs or any of the two IP addresses.

### 1.2 The Encoder key features:

- Composite, HDMI, HD/SD-SDI video inputs.
- Full HD 1080i support.
- Analog XLR and Serial Digital embedded audio inputs.
- Provides internally generated PSI .
- Selectable MPEG-2 SD or H.264 SD/HD real-time video encoding.
- Simultaneous output of 2xTS (ASI) with UDP/IP or RTP/IP transport stream.
- CBR or VBR outputs.
- User selectable resolution and bit rate.
- MPEG-1 Layer II audio encoding.
- Control and monitoring via LAN (Ethernet).

### 1.3 The Transcoder key features:

- Transcoding of an SD/HD program :
  - from MPEG-2 (SD/HD) to MPEG-2 (SD) format;
  - from MPEG-2 (SD/HD) to H.264 (SD/HD) format ;
  - from H.264 (SD/HD) to MPEG-2 (SD) format;
- Digital to digital decode and re-encode with minimum loss in video quality;
- Supports multi-bitrate transcoding;
- Up to 1080i HD output;
- Audio is passed through;
- PID filtering;
- Built-in multiplexer allows to generate output TS with transcoded programs and/or original programs which are applied to the input;
- PSI generation;
- Supports OTA, EPG, DVCrypt CAS 3000/10000/100000 subscribers;
- Input interface: DVB ASI (1);
- Output interface: DVB-ASI (2) and IP(1).

## 1.4 Specification

Video Input	
Analog Input:	Composite (BNC, 75Ω)
Level:	1 Vp-p
Digital Input:	SDI (BNC, 75Ω) or HDMI (HDMI 19pin)
Level:	800mVp-p (SDI)
Aspect Ratio:	4:3, 16:9
Audio Input	
Analog Input:	1 Stereo (2 channels, XLR)
Freq. Range:	20Hz ~ 20KHz
Impedance:	600 Ω/ 20KΩ
Digital Input:	Embedded SDI or HDMI
Sampling Rate:	48 KHz
Video Encoder	
Encoding:	MPEG-2 HP@HL, MP@HL, MP@ML MPEG-4 H.264 HP@L4, MP@L3
Encoding Rate:	0,5~15 Mbps
Chroma Format:	4:2:0
Bit Rate Mode:	CBR,VBR
Audio Encoder	
Encoding:	MPEG-1 Layer II 64 - 320 Kbps
Sampling Rate:	48KHz
TS Output	
Transport Stream:	2 ASI
Connector:	BNC(75Ω)
TS Bit Rate:	0,5~14 Mbps
Packet Format:	188 Byte
IP TS Output and Ethernet control	
Ethernet type:	10/100 Base-T (RJ-45)
Format:	UDP/IP, RTP/IP
IP Address Format:	Multicast, Unicast
TS Bit rate:	0,5~60 Mbps
TS Packet format:	188 Byte
General	
Power:	~220V+/-20%
Power Consumption:	Max 8W
Size:	19``, 1U 480*45*180 (mm)
Weight:	3 Kg

### 1.5 Front panel illustration

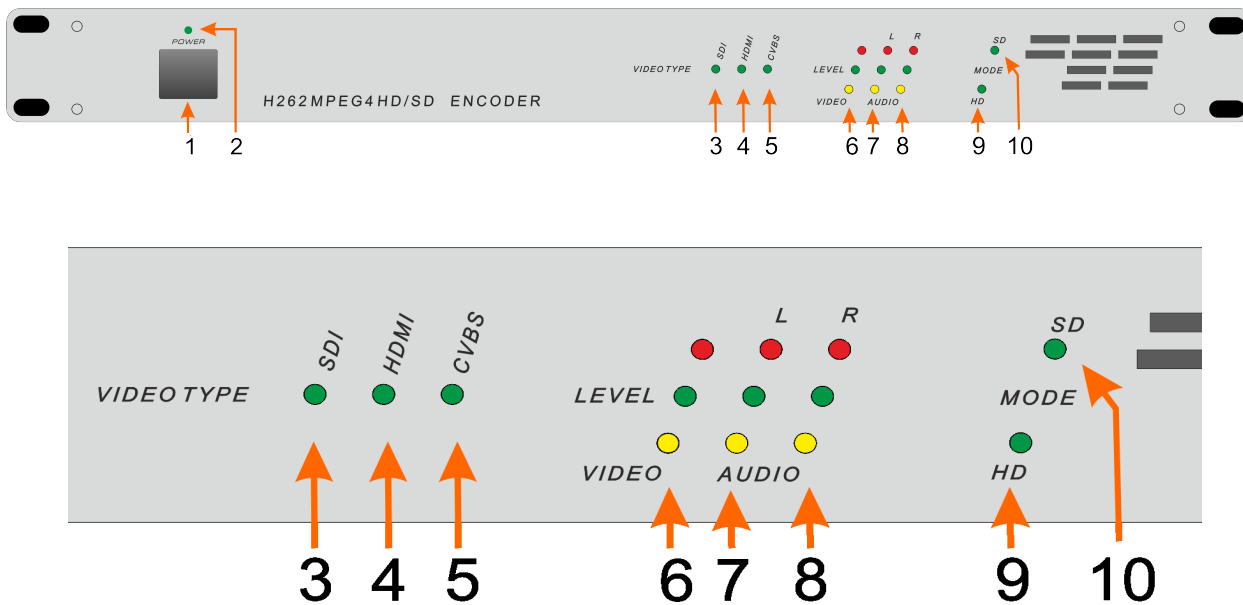


Fig.1.1

1	Power on/off switch	
2	Power Status Indicator	
3	Input Signal Type Indicator: SDI	Green LED: yes
		Red LED: no
4	Input Signal Type Indicator: HDMI	Green LED: yes
		Red LED: no
5	Input Signal Type Indicator: CVBS	Green LED: yes
		Red LED: no
6	Video Source Status Indicator.	Green LED: signal is available
		Red LED: no signal
7	Audio Source Indicator: Left	Green LED: Nominal level
		Red LED: High level
		Yellow LED: Low level
8	Audio Source Indicator: Right	Green LED: Nominal level
		Red LED: High level
		Yellow LED: Low level
9, 10	Input Signal standard: SD or HD	Green LED: yes

### 1.6 Rear panel illustration

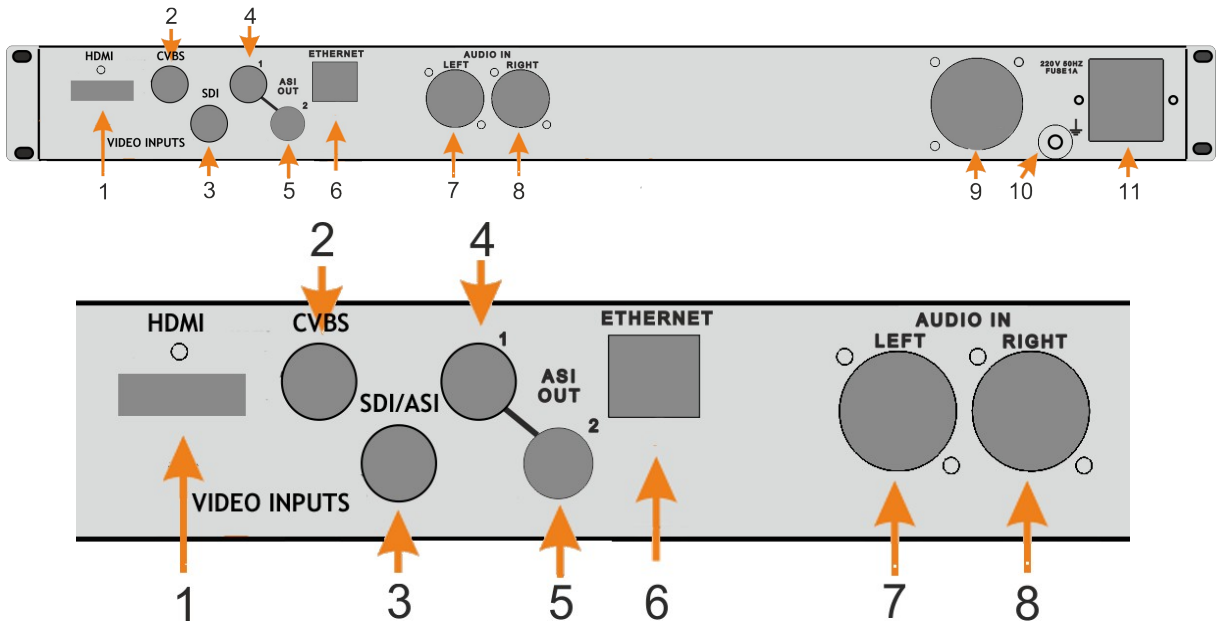


Fig.1.2

1	HDMI input
2	CVBS input
3	HD/SD-SDI or ASI input
4,5	Two ASI outputs
6	ETHERNET / IP
7	Analog audio input: Left
8	Analog audio input Right
9	Cooling FAN
10	Ground pole
11	Fused Power Inlet

## 2. How to Work with MPEG-2 /H.264 Encoder/Transcoder

### 2.1. Main part

- Prepare relevant environment for installation (See 5.1).
- Ground the device (See 5.2 ).
- Connect Power Cord (14. Fig.1.2).
- Connect ASI OUT to the device with ASI Input (5 or 6, Fig.1.2).
- Connect Ethernet port to PC for setting of the Encoder/Transcoder modes and parameters.(RJ45 (7), Fig.1.2).
- Switch on Power (1, Fig.1.1).
- Set Encoder/Transcoder IP Address using EthernetSetup utilite. (See 5.3).
- Launch PC DVBTToolkit program.
- Add the Encoder/Transcoder to the System. The wizard will help you connect it to the system (See 5.4).
- Start DVB\_Setting program from the DVBTToolkit's client.(See 2.1)

### 2.2. Setting of the Encoder parameters

- Start DVB\_Setting program from the DVB Toolkit's client3.2. (See DVBTToolkit installation).
- Set the Encoder parameters you need (See 3.3 Encoder settings).
- Save the new parameters to the Encoder: Click "Set Selected Settings" button. After saving, the Encoder is ready for use.

### 2.3. Setting of the Trancoder parameters

- Select "Transcoder" Mode ( 2.3. Trancoder Settings)
- Set the Transcoder parameters you need. (See 3.4. Transcoder Settings)
- Save the new parameters to the Transcoder: Click "Parameters Settings" button. After saving, the Transcoder is ready for use.

### 2.4. Setting of the Output signal parameters

- Set the IP Output ( See 3.5.2. IP Outputs Settings).
- Set the ASI Outputs ( See 3.5.3. ASI Outputs Settings).



## 3. Operation

### 3.1 DVBSetting program

Setting of the Encoder/Transcoder parameters is done using DVB\_Setting utility which is a part of the DVBToolkit program. It allows you to adjust the speed of the output TS bit rate, and change the mode of operation of the encoder, with a constant bit rate (CBR), or a variable (VBR). The output resolution and input signal format are also controlled.

### 3.2. DVBToolkit installation

#### 3.2.1 Server PC requirements.

Please check that following requirements are met:

- CPU: 1 GHz or faster;
- RAM: 1 GB or more;
- HDD: at least 1 GB of free space;
- LAN and USB interfaces;
- Operating System: Windows XP, Windows Vista, Windows 7, Windows 8.

#### 3. 2.2 Software installation

Run the included *DVBToolkit\_Install.exe* installation file and follow the prompts.

#### 3.2.3 Starting the Management Program

The Client Program can be launched from the Start menu. / All Programs / DVBToolkit / Client. When you launch the Client, the program will ask you to choose the connection type.

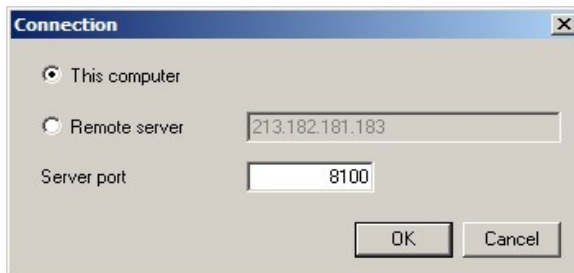


Fig.3.1

Select "This computer" if the program Server is installed on the same computer, or "Remote server" if it has been installed on another PC. Then it is necessary to enter the IP address and port of the PC on which you have installed the server.

After the connection to the Server, system of administration "Login" window will appear:

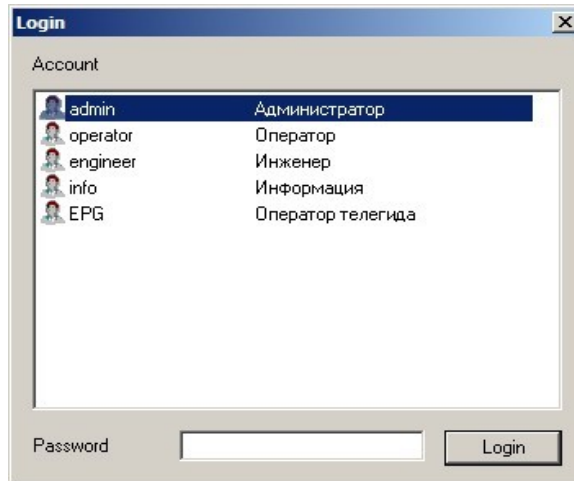


Fig.3.2

The program uses a system of administration which is structured as follows:

- DVBToolkit contains several functional modules.
- Administrator is a main user of the DVBToolkit program.
- Administrator enters the program as an “Administrator” with personal password and appoints the other users.
- The Administrator also can on / off some functions of the DVBToolkit program.
- The number of users and their rights determined by the administrator.

All default passwords are empty.

Clicking the “Login” button brings you to the main window:

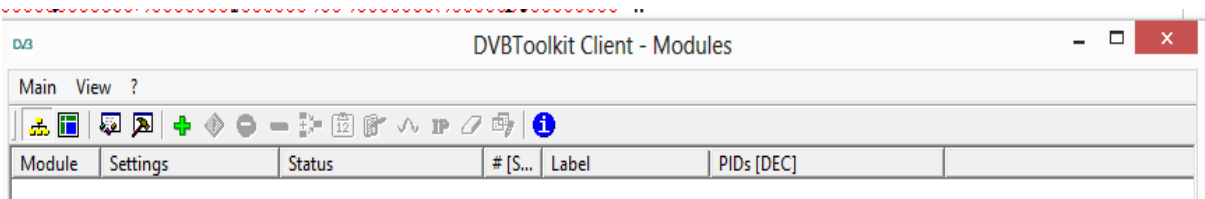


Fig.3.3

### 3.2.4 Adding a device to the configuration program

1. Select *View – Modules* from the menu or icon.
2. Click on *Add new module* icon



Click “Add new module” icon and the following window will appear ( Fig.3.4):

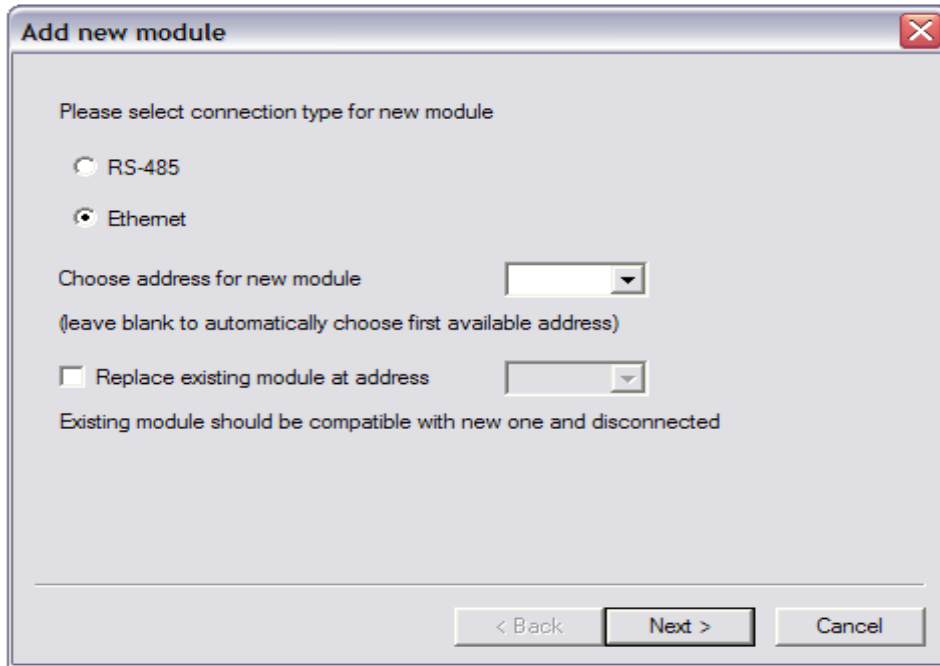


Fig.3.4.

Click “Next” and follow the wizard's prompts. You can assign new IP to the device at next step (See Chapter.5.4).

Finally, new Encoder will be added to the main window ( Fig.3.5):

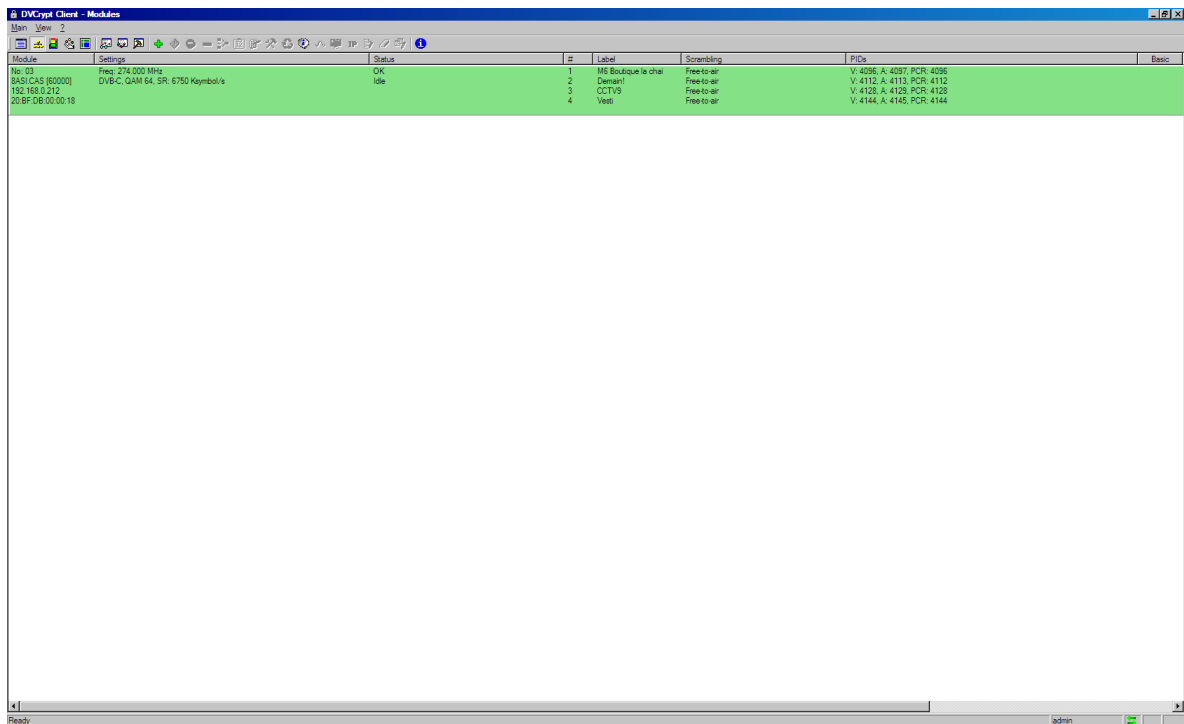


Fig.3.5

When the Encoder has been added, click  to change the settings (Fig.3.6):

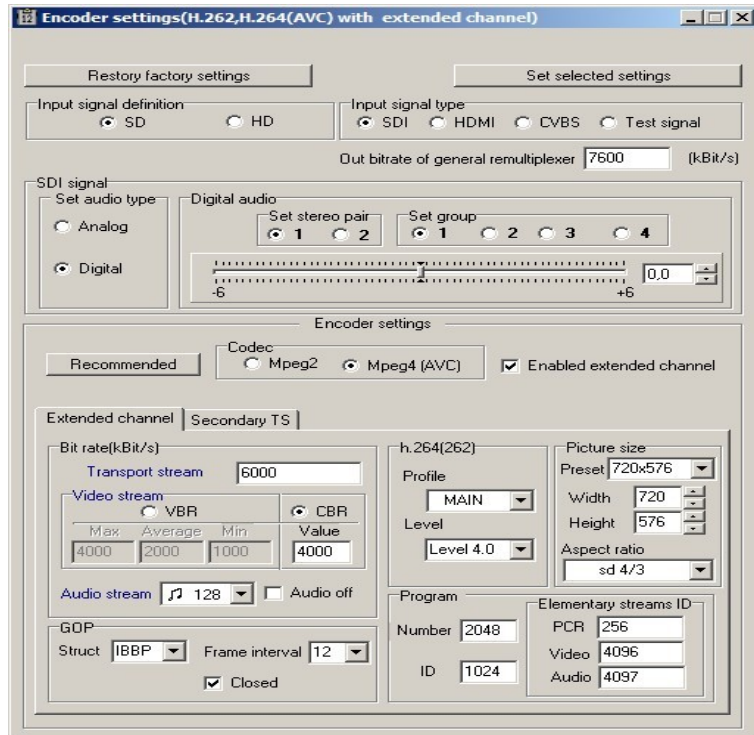


Fig. 3.6

### 3.3 Encoder Settings

The encoder has an output re-multiplexer, which allows to set the desired output bit rate of the encoder.

Mode " Test signal " allows you to turn on the pitch sound and the color bar generator.

If any of these parameters have been chosen incorrectly, the following warning appears when you click "Set selected settings" (Fig.3.7).

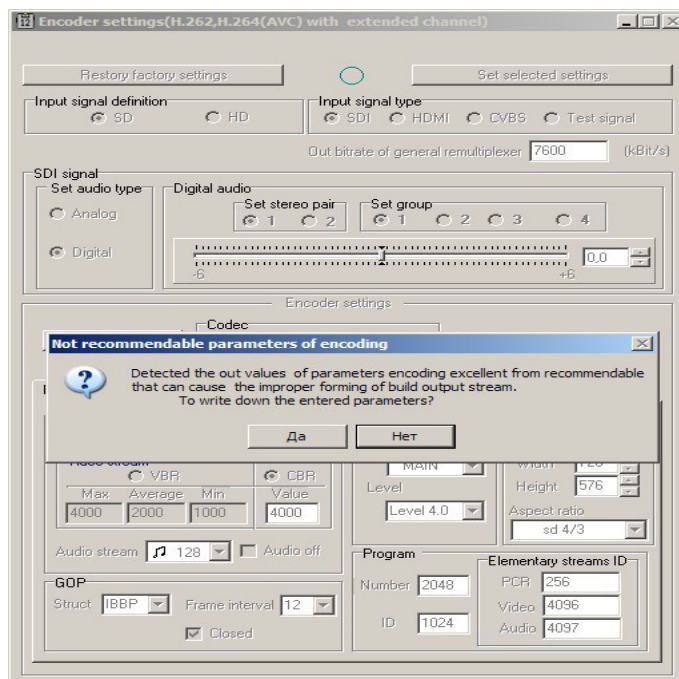


Fig.3.7

If you select "Yes", then set parameters will be applied and saved, if you select "No", then the wrong selections are highlighted with red color, and when you hover the mouse on them a hint will appear ( Fig.3.8).

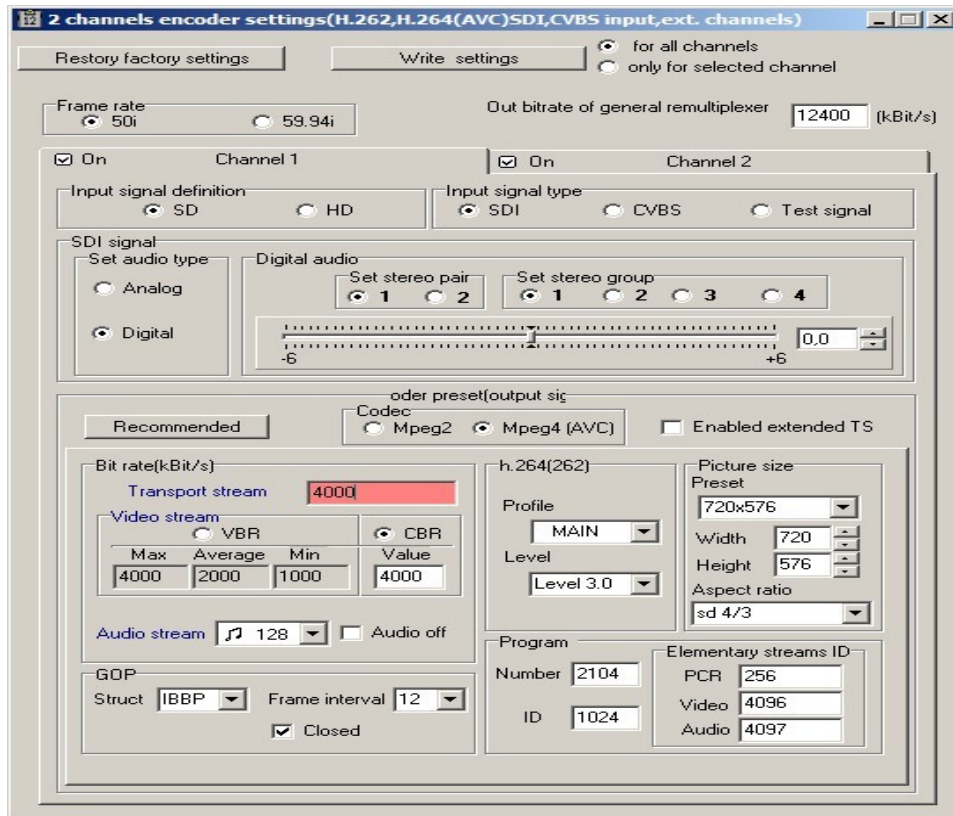


Fig.3.8

The button "Recommended" restores the operating parameters that can be saved by pressing the "Write settings" (Fig.3.8).

The button "Restore factory settings" is used to return the encoder to the working condition in the event of incorrect settings.

You can change the PID, and the ID number of the elementary stream.

### 3.4 Transcoder Settings

1. Select "Transcoder" mode (Fig. 3.9).

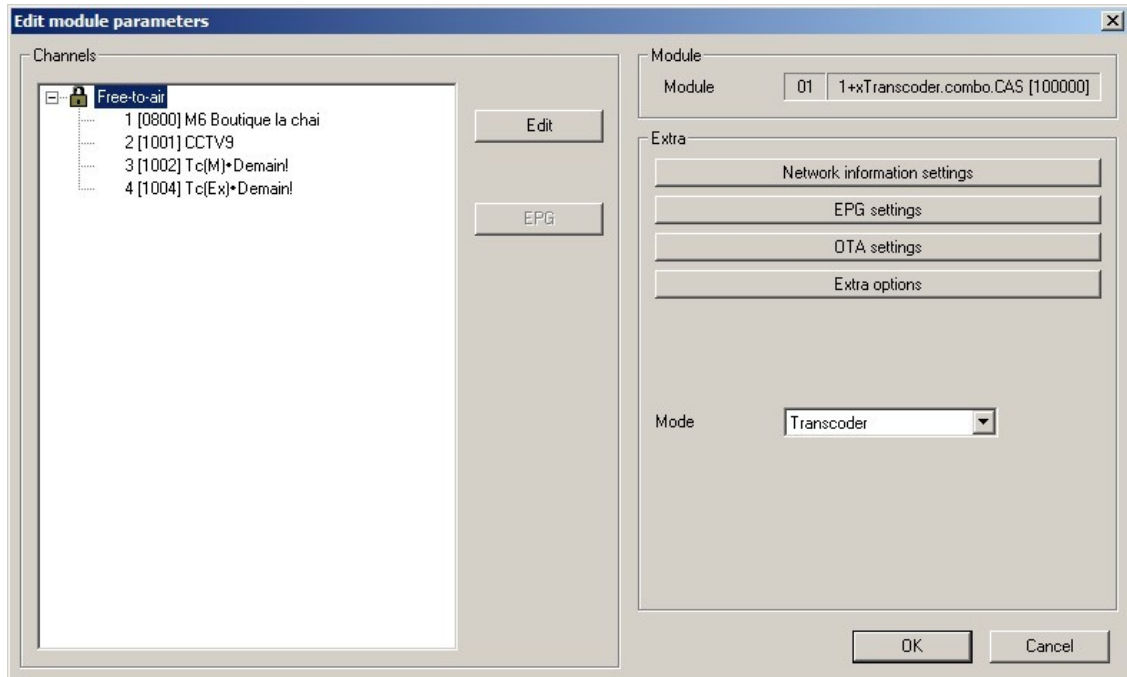


Fig.3.9

2. Click OK and wait while the device switches from the "Encoder" to "Transcoder" mode. You can see the progress in the status bar of the DVBT toolkit (Fig.3.10). Wait until the color of the device in the system becomes green.

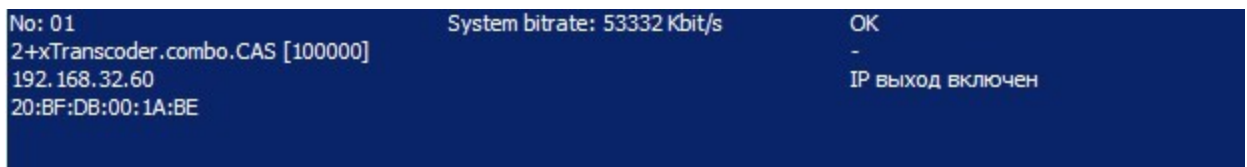



Fig. 3.10

3. Scan input ASI streams and take programs for transcoding:

click icon  In the main window toolbar (Fig.3.11)

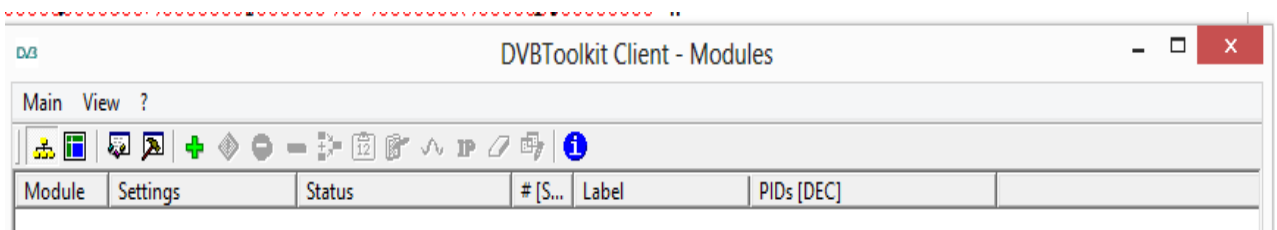


Fig. 3.11

The Multiplexer Window appears (Fig. 3.12):

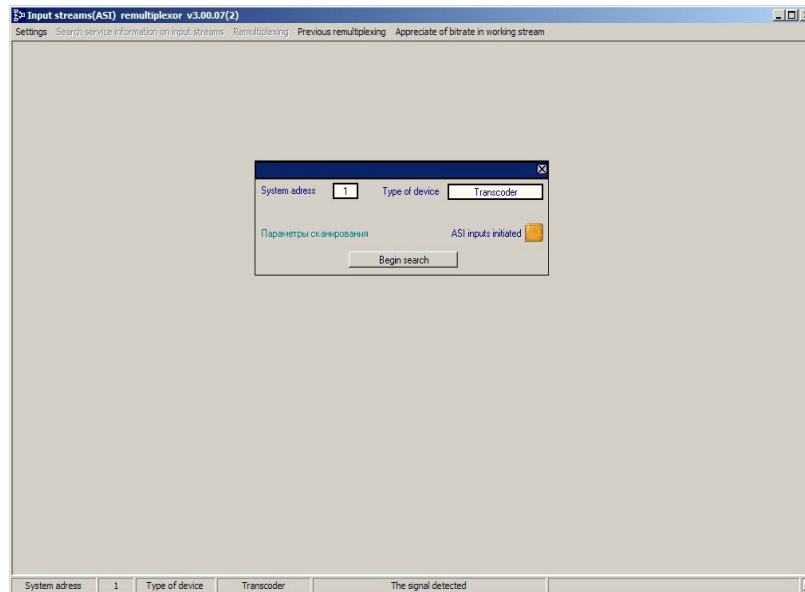


Fig. 3.12

Click “Begin search” to start the scanning process. When the scan is complete, the message appears (Fig. 3.13):

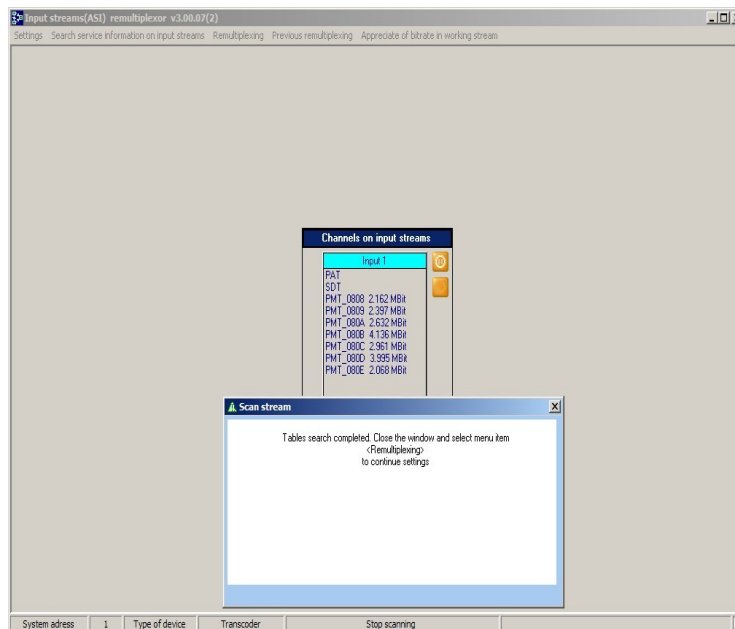


Fig. 3.13

When the scan is complete:

- Select input programs that you wish to add to the output stream and drag them with mouse to the right window ( Fig. 3.14).
- Select a program for transcoding in the right window.
- Switch on "Transcoding".

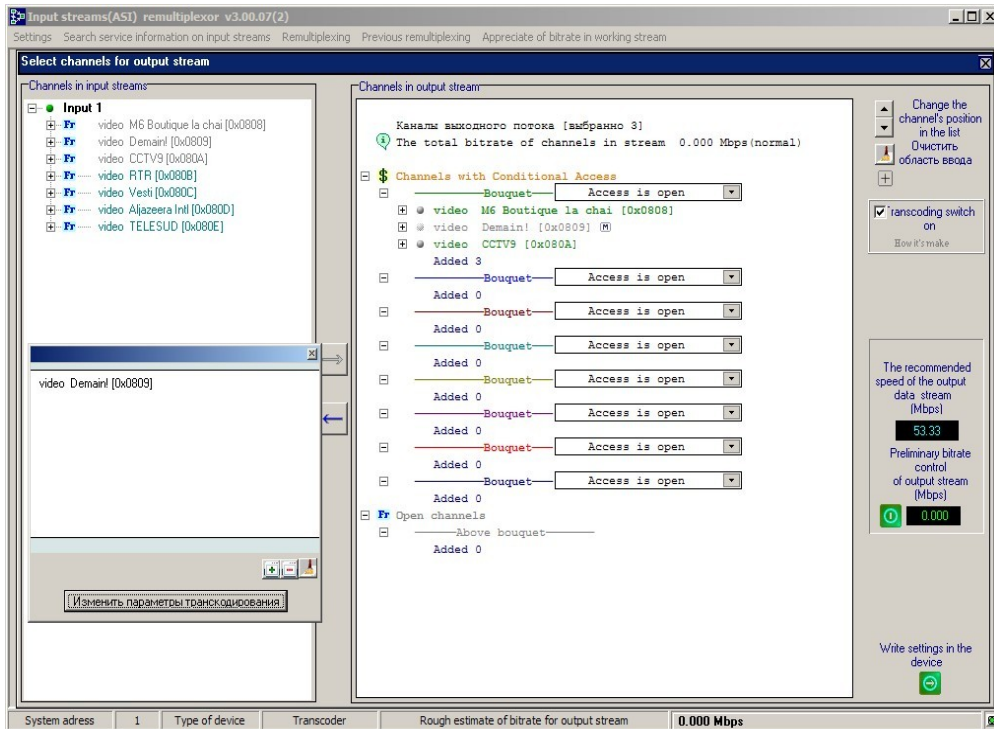


Fig.3.14

If necessary, you can Click “Change the Transcoding parameters” and Settings window will appear (Fig.3.15):

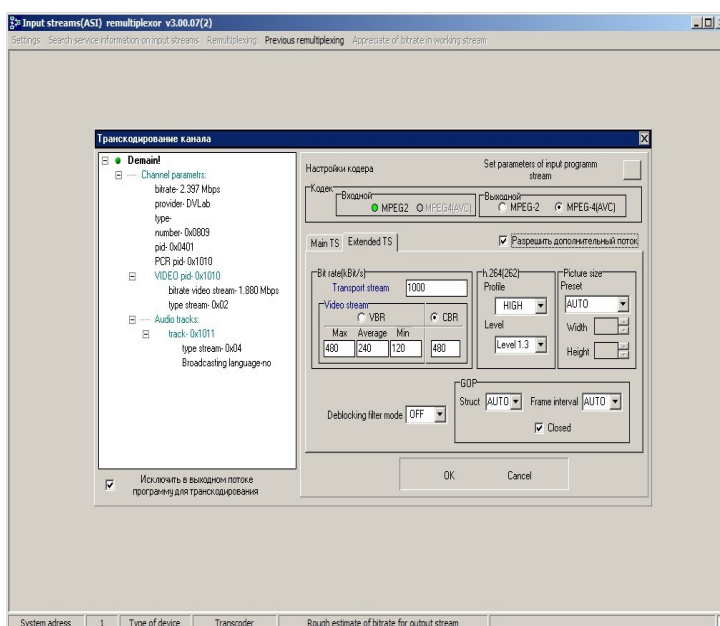


Fig.3.15



In this window you can:

- select the output format : MPEG2 or MPEG4;
- switch on an additional stream;
- switch off the program from output stream.

Having made the required changes, click "OK" and the previous window will return(Fig. 3.14)  
Next Step: Measure the bit rate of the selected stream and compare it with a valid value. If it is valid, click "Write settings in the device" and move on to the next window.

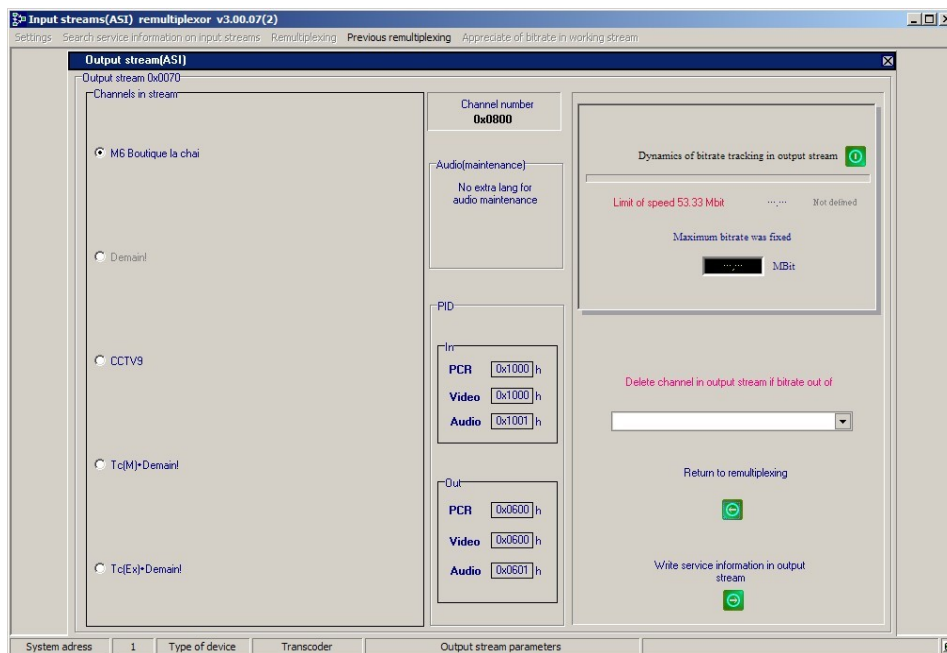


Fig.3.16

Click the "Write service information in output stream." Wait until the completion of the process.

Transcoding with 2 output streams is possible only when output is set as H.264.

### 3.5. Outputs.

The Encoder/Transcoder has 2 IP outputs. IP output may be used for monitoring or IP broadcast. It is possible to output the multiplex. In this case, the main IP output carries the multiplexed TS.

Each IP output of the encoder may have its own IP address:

1. Channel 1
2. Channel 1 +

The channel with "+" is the channel with the lower resolution. Supported protocols UDP, RTP.

The Encoder has two equal ASI outputs, each of which may operate in one of the following modes:

1. Channel 1
2. Channel 1 +

#### 3.5.1 Recommendations.

The maximum bit rate can not exceed 15 Mbit/s.

##### CBR Mode.

The difference in speed between the transport stream and the video stream is recommended to choose  $TS - (TV + Ta)$ , at least 400 kbit / s.

Where TS- transport stream.

TV- video stream.

TA- audio stream.

##### VBR Mode.

The minimum bitrate (min) 0-0,75 the average bit rate (average).

Maximum bit rate (max) 1.2-2 medium (average) bit rates

Bit rate (transport stream) is not less than 400 kbit / s bit rate greater than the maximum bitrate + audio.

It should be borne in mind the recommended resolution mode for encoder:

##### HD Mode:

1920x1080 50i	1920x1080 60/59, 94i
1440x1080 50i	1440x1080 60/59, 94i
960x1080 50i	960x1080 60/59, 94i
720x1080 50i	720x1080 60/59, 94i

##### SD Mode:

720x576 50i	720x480 60/59, 94i
704x576 50i	704x480 60/59, 94i

### 3.5.2 IP Outputs Settings

Click icon «IP» on the toolbar (Fig.3.11)

IP output configuration window appears Fig.3.17.

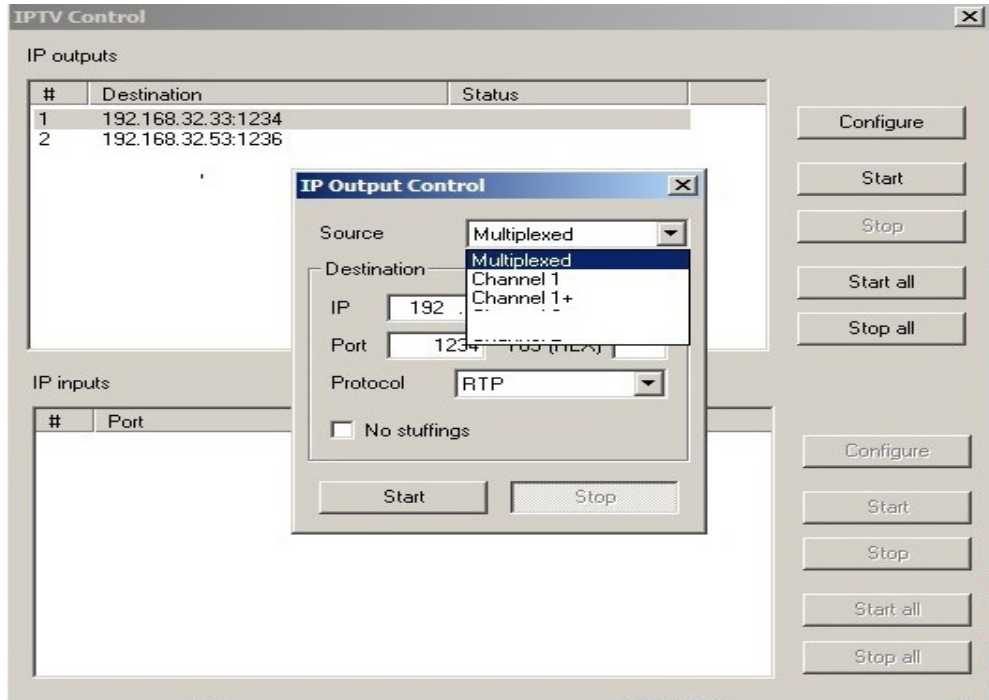


Fig.3.17.

The encoder has the opportunity to work with two IP addresses sent in one IP stream. Each encoder channel may have its own IP address. There are several operation modes for each IP channel:

1. Output is disabled.
2. The output is commutated to channel 1.
3. The output is commutated to channel 2.
4. The output delivers two multiplexed channels.

The second channel works in the same mode. If two channels work in the "Multiplex mode", stuffing should be switched off (disabled), or one channel should be disconnected, while the second may work in the "multiplex" mode both with the enabled and disabled stuffing.

In the "channel1" and "channel2" modes stuffings are disabled.

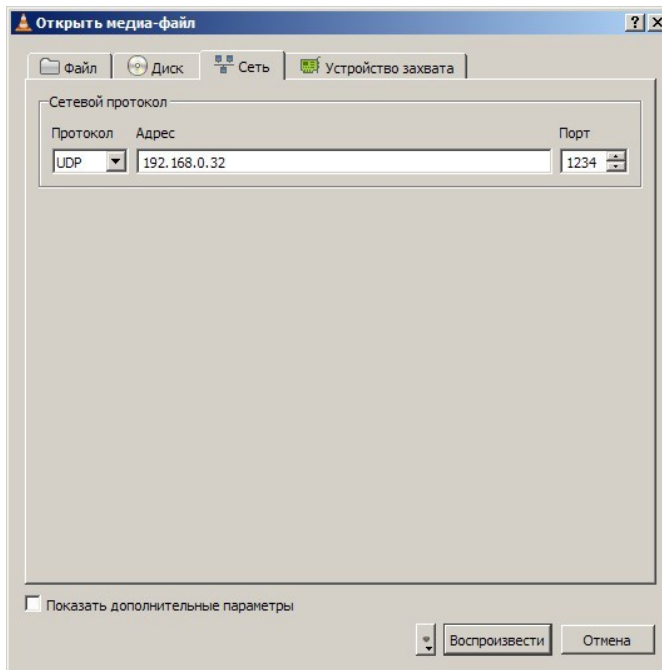
It is necessary to choose IP address and port that the stream will be broadcast to, as well as the protocol (RTP, UDP, RTP +) for each of the channels.

When the required parameters are selected, click "start" and close the window.

It is possible to check (monitor) work of IP inputs using VLC player.



Select Media / Network and enter the necessary parameters. An example is given on Figure below.



### 3.5.3 ASI Outputs Settings

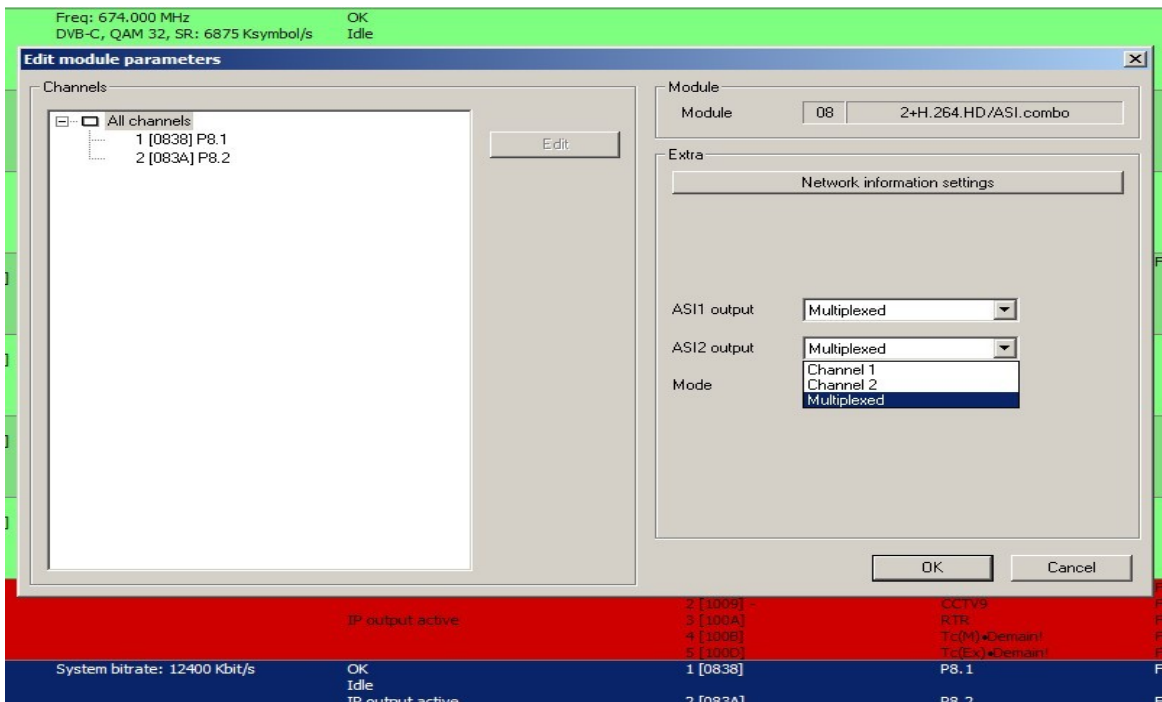


Fig.3.18

## 4.Warranty

Warranty period – 24 months from the selling date

The manufacturer does not take any responsibility for defects occurred at the customer's fault or trading company's during careless transportation, improper storage, technical service or usage, mechanical damages, violating the operation rules.

The software is delivered "as is" unless mentioned otherwise. The manufacturer does not bear responsibility for any consequences of using the software. The software can be used without any limitations. Additional information on the software interfaces can be sent upon request.

The manufacturer reserves a right to bring any changes to the product, software or description without notice. Please ask manufacturer for latest information and updates.

### **Dear customers!**

We make improvements and/or changes in our products and we reserve the right to make changes without notice. Though every effort has been made to ensure that this document is current and accurate, more information may have become available subsequent to the production of this guide.

Our products are under continual improvement, so we would like to draw your attention to the fact that the old-model devices may not be supported by the most recent version of our software. It is caused by using in our equipment advanced technical solutions and new electronic components.

We are pleased to receive at ***info@dv-lab.com*** comments and remarks regarding our products and software. At the same address we are ready to provide further information about the products application and updated software.

## **5.Appendix**

### **5.1 Environment Requirement**

- Operating Temperature 5~40, 0~45°C(short time), air-conditioning is recommended.
- Device power, air-conditioning power and lighting power are independent of each other. Device power requires AC power 220V 50Hz. Please carefully check before use.
- Machine Hall Floor Electric Isolation, Dust Free, Ground anti-static material.

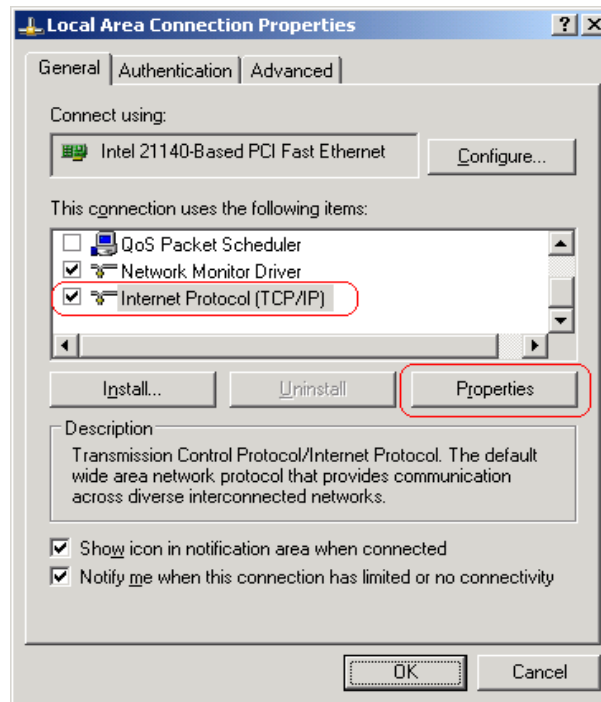
### **5.2 Grounding Requirement**

- Good grounding is the basis of reliability and stability of devices. Good grounding is the most important guarantee against electric discharge and interference.
- Coaxial cable's outer conductor and isolation layer must ensure proper electric conductivity with the metal housing of device.
- Grounding conductor must adopt copper conductor in order to reduce high frequency impedance, and the grounding wire must be as thick and short as possible.
- It is prohibited to use any other device as part of grounding of electric circuit.
- The area of the conduction between grounding wire and device's frame should be no less than 25mm<sup>2</sup>.

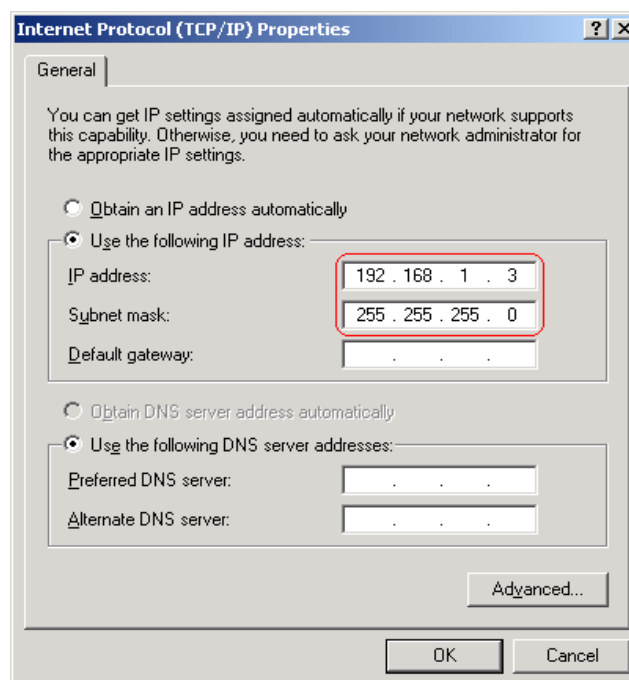
### 5.3. How to connect new Device to the System through Ethernet (TCP / IP)

#### Server computer setting

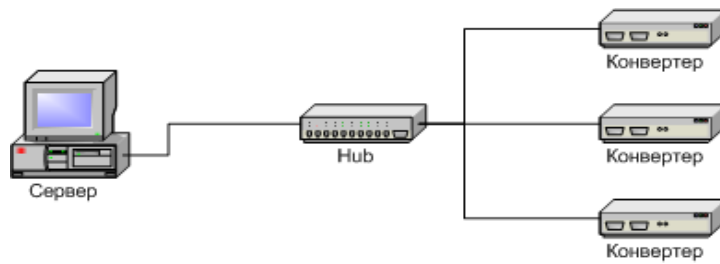
The server computer must be equipped with network adapter with installed TCP/IP.  
Network adapter properties:



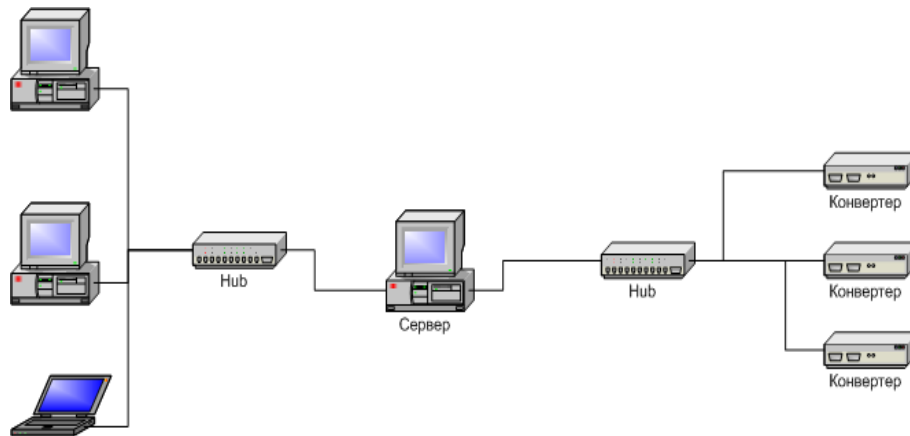
The computer IP address must be assigned statically. As example IP address is 192.168.1.3 (shown at the Figure below).



Connection scheme is shown below:

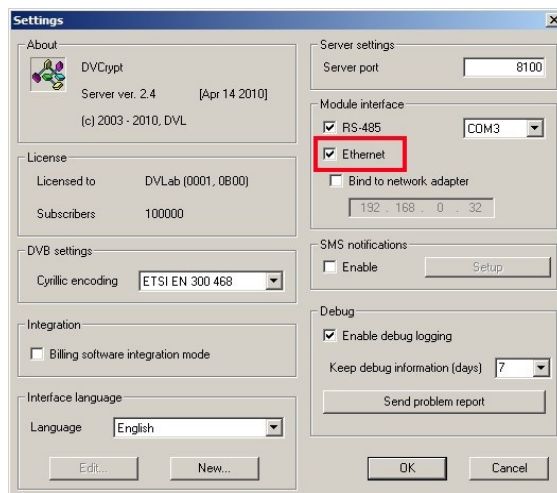


The server is connected to a standard Ethernet hub/switch. The Device is connected to the Ethernet hub/switch. There can be other computers in this local network. If the server is connected to a local network containing other PC, it is recommended to install the second network adapter in the server in order to guarantee fail-safe and secure connection. In this case the connection scheme should be the following:



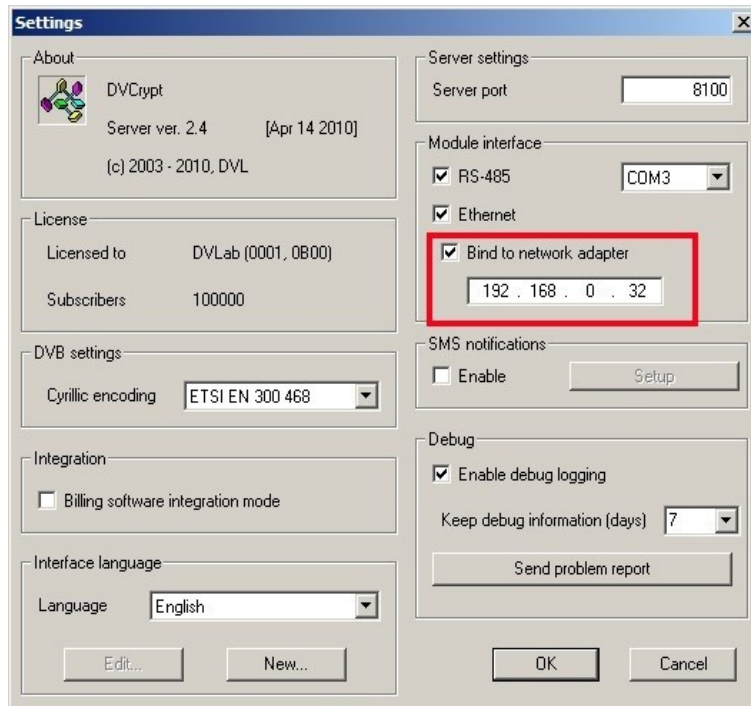
First network adapter and Device are attached to a hub. The second network adapter is attached to other hub connected to other PC.

Select **"Module interface/Ethernet"** option in Server settings:





If the server contains special network adapter for connection to Device, it is necessary to select “**Bind to network adapter**” option and assign its IP address.

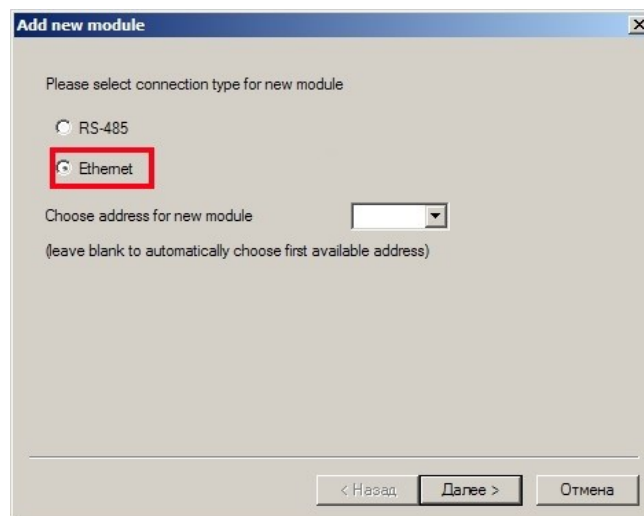


#### 5.4 How to add a new Device to the system.

To add a new Device to the system connect it to the hub by a cable and switch it on.

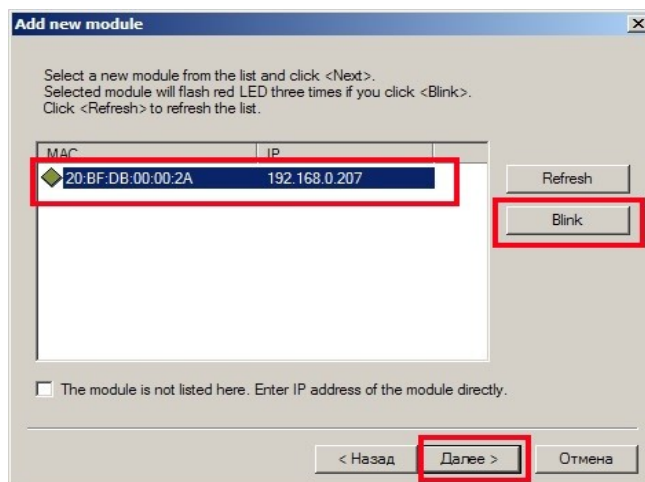
Press button **Add new module** 

Select connection type **Ethernet**

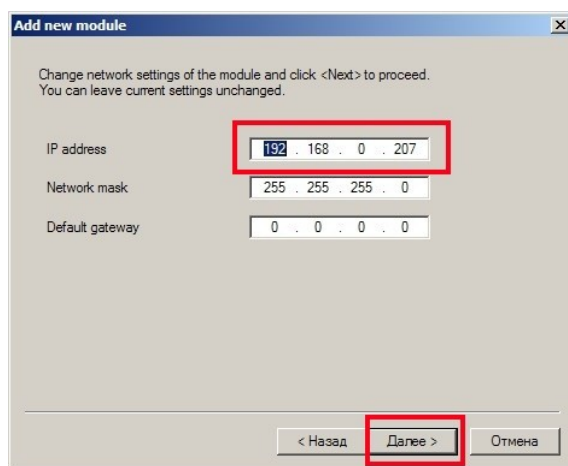


New Device connected to the system will be searched, their MAC and IP addresses will be listed. Search can be repeated by pressing **Refresh** button. If there are a few Devices, it is difficult to determine the Device among others. In this case you can select the Device in the list and press **Blink** button. The selected Device will flash red LED (built in Ethernet connector) three times.

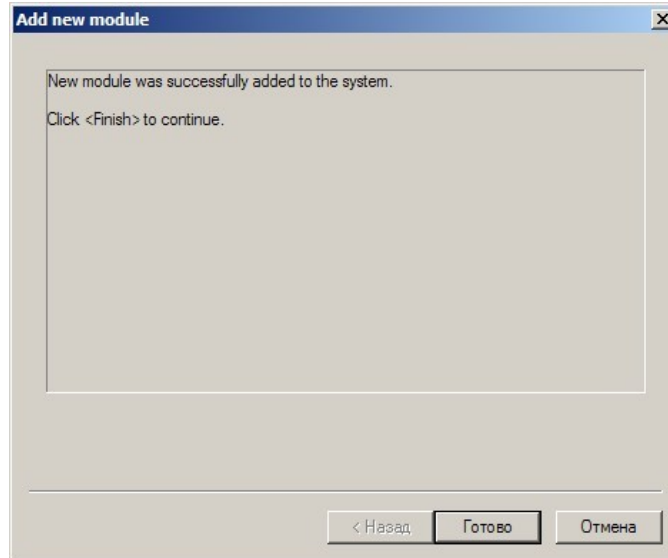
Next step is entering IP address of selected Device.



The server will set the IP address



Select any free IP address in the range of this local network (for example, we use addresses from 92.168.1.100 to 192.168.1.200) and enter it. Network mask and Default gateway should be set only if the Device will work in other sub-networks for the new Device and add it to the system. The IP address and MAC will be shown in Devices window in Control Software. It will be impossible to change the Device IP address hereafter. To change the Device IP address it is necessary to delete the Device from the system and add it again.



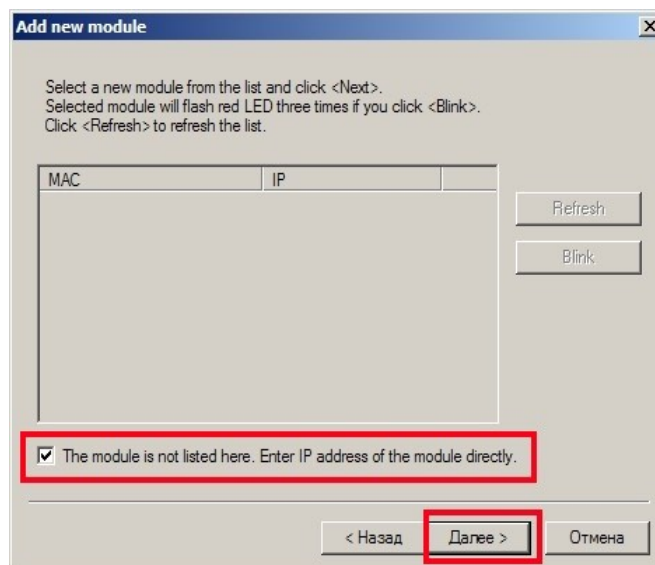
When the Device is added, it should be set. Double click on the Device number and it will appear **Converter setting** window.

### Notes

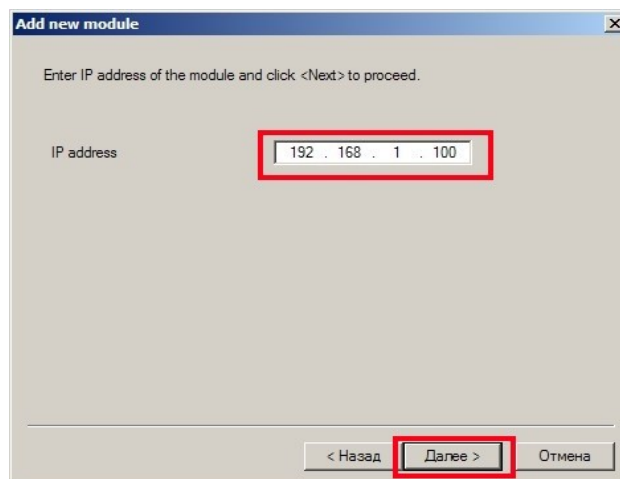
If the distance between the Server and Devices is rather long and there are routers, and automatic search doesn't work - in this case it is necessary to do the following:

Connect the new Device to the local network or to the Server directly and set the IP address as described below.

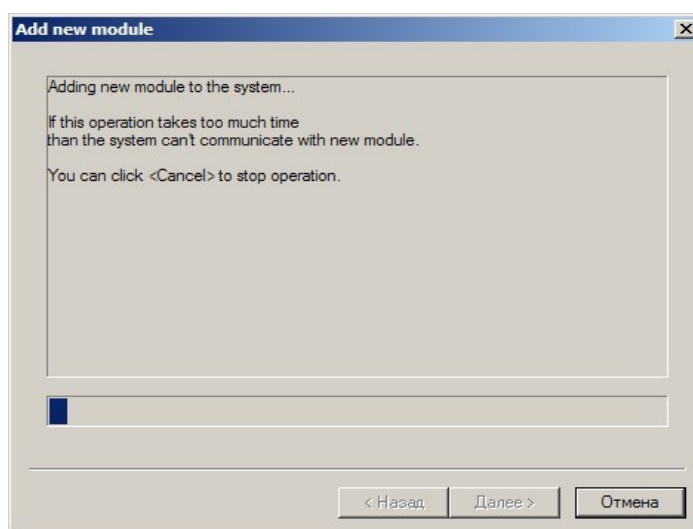
Connect the new Converter to remote network. Run adding procedure and select the option "The module is not listed here. Enter IP address of the module directly"



Enter IP address of the Device (Module).



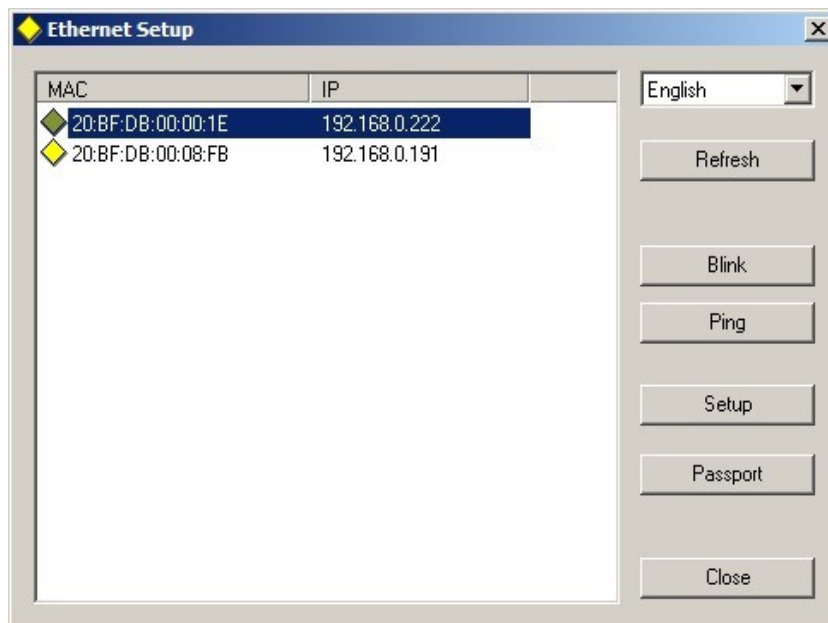
The server will try to communicate with the Device and add it to the system:



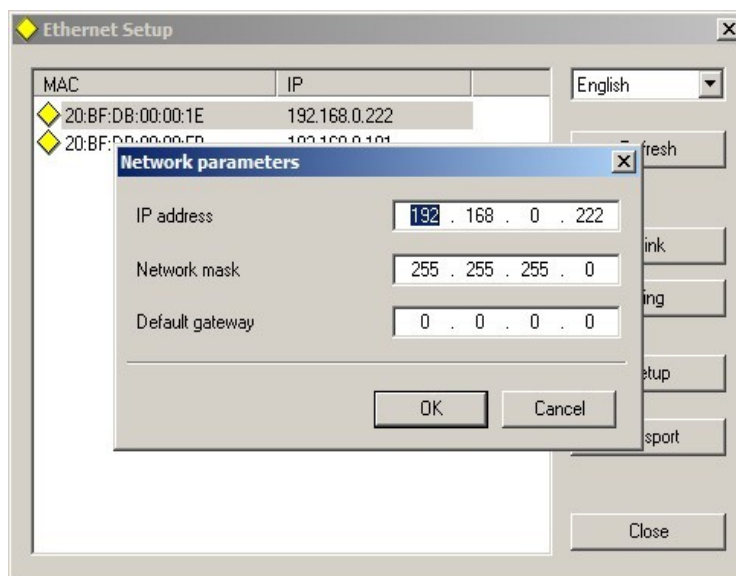
### **Attention!**

All Devices are delivered set to the IP address **192.168.0.254** or **192.168.0.253**, network mask **255.255.255.0**.

The Devices should have different IP addresses when you add them to the system. The delivery set includes **EthernetSetup.exe** utility which makes it possible to change Device IP address and network mask. The utility doesn't require installation. Before changing the IP address connect the Device to Ethernet hub/switch, connect to it also a PC having installed network board (network board IP address should be in the Device IP address range. For example, the Device IP address is 192.168.0.254, then network board IP address can be in 192.168.0.1.. 192.168.0.254 range, network mask 255.255.255.0). Then run **EthernetSetup.exe**, the program will find the Device.



Select the device and press **Setup** button



The **Network parameters** window will appear, where you can change the Device IP address and network mask. The procedure of assigning IP address should be performed for all Devices before adding them to the system. Pressing **Ping** button you can check connection between the PC and the Device. If you press **Blink** button, the selected Device will flash red LED (built in Ethernet connector) three times.

**Attention!**

It is not recommended to change the Device IP address after the Device has been already added to the system as it will cause connection failure. To re-establish connection it is necessary to repeat procedure of adding the Device to the system again.